

# TANDBERG

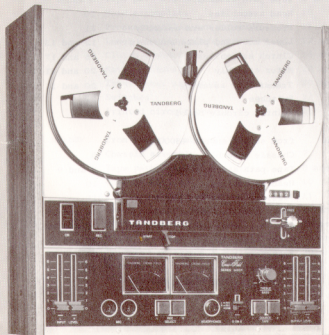
## 3300X 3400X 3500X 3600XD STEREO

### Illustrated Parts List

#### INSTRUCTIONS FOR ORDERING OF REPLACEMENT PARTS

The serial number, which is a seven digit number found on the rear of the apparatus, should always be given when ordering replacement parts. Please give the ordering number together with the full description when ordering parts.

Example: 302896 - 3300X, Surround, DIN socket, plastic



## INDEX

<u>Model</u>	<u>Assembly</u>	<u>Page</u>
3300X	Chassis assembly	4 and 5
	Tape path assembly	8 and 9
	Head assemblies	10
	Pressure roller arm assembly	11
	Lower mounting plate assembly	12 and 13
	Clutch assemblies	16 and 17
	Motor assembly	20 and 21
	Transformer	20 and 21
	Switches	22
	Printed circuit boards	23
3400X	up to serial number 4300000	
	Chassis assembly	6
	Tape path assembly	8 and 9
	Head assemblies	10
	Pressure roller arm assembly	11
	Lower mounting plate assembly	12 and 13
	Clutch assemblies	16 and 17
	Motor assembly	20 and 21
	Transformer assembly	20 and 21
	Switches	22
	Printed circuit board	23
3400X	from serial number 4300001	
	Chassis assembly	6
	Tape path assembly	8 and 9
	Head assemblies	10
	Pressure roller arm assembly	11
	Lower mounting plate assembly	14 and 15
	Clutch assemblies	18 and 19
	Motor assembly	20 and 21
	Transformer assembly	20 and 21
	Switches	22
	Printed circuit boards	23

INDEX - continued

<u>Model</u>	<u>Assembly</u>	<u>Page</u>
3500X	Chassis assembly	4 and 5
	Tape path assembly	8 and 9
	Head assemblies	10
	Pressure roller arm assembly	11
	Lower mounting plate assembly	14 and 15
	Clutch assemblies	18 and 19
	Motor assembly	20 and 21
	Transformer assembly	20 and 21
	Switches	22
	Printed circuit boards	23
3600XD	up to serial number 4200000	
	Chassis assembly	7
	Tape path assembly	8 and 9
	Head assemblies	10
	Pressure roller arm assembly	11
	Lower mounting plate assembly	12 and 13
	Clutch assemblies	16 and 17
	Motor assembly	20 and 21
	Transformer assembly	20 and 21
	Switches	22
	Printed circuit boards	23
3600XD	from serial number 4200001	
	Chassis assembly	7
	Tape path assembly	8 and 9
	Head assemblies	10
	Pressure roller arm assembly	11
	Lower mounting plate assembly	14 and 15
	Clutch assemblies	18 and 19
	Motor assembly	20 and 21
	Transformer assembly	20 and 21
	Switches	22
	Printed circuit boards	23

## MECHANICAL PARTS

Parts belonging together are arranged in order with the main part first followed by the associated parts. Descriptions of the associated parts are indented and descriptions of the sub-group of the parts are further indented.

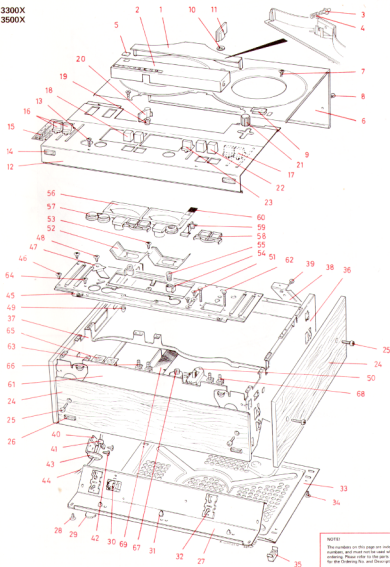
\* These parts are not available as replacement parts.

## Chassis assembly.

SPECIFY THIS WHEN ORDERING					Quantity per assembly	Total	Notes
Index	Ordering No.	Description					
	*	CHASSIS ASSEMBLY					1900K and 1900K
1	991908	-1300K	Cover, heads	1	1		supplied with index 1 and 4
2	991907	-1300K	Cover, pressure roller arm	1	1		supplied with index 1, 4 and 5
3	270469	-1300K	Button, push, cover lock	3	3		
4	274183	-1300K	Spring	3	3		
5	901970	-1300K	Window, turquoise, plastic	1	1		
6	991903	-1300K	Plate, deck	1	1		1900K supplied with index 9
7	991906	-1300K	Plate, deck	1	1		1500K
8	221106	-1300K	Screw, 3 x 8 mm csk hd	4	4		1900K
9	263608	-1300K	Screw, 3 x 8 mm csk hd, black	4	4		1500K
10	227899	-1300K	Screw, plate, 1/4" No. 6 flange hd	2	10		1900K
11	269150	-1300K	Screw, plate, 1/4" No. 6 flange hd, black	2	2		1500K
12	214960	-1300K	Washer, plastic	1	1		
13	262322	-1300K	Knob, black, plastic	1	1		Speed change
14	991906	-1300K	Plate, instrument	1	1		1900K
15	991904	-1300K	Plate, instrument	1	1		1500K
16	298250	-1300K	Screw, 3 x 12 mm csk hd	4	4		
17	807738	-1300K	Foot, rubber	2	4		
18	300195	-1300K	Mask, felt	2	2		
19	302582	-1300K	Knob, turquoise, plastic, with spring	2	2		1900K, INPUT LEVEL
20	110827	-1300K	Knob, red, plastic, with spring	2	2		1900K, INPUT LEVEL
21	113112	-1300K	Knob, black, plastic, with spring	2	5		1900K, INPUT LEVEL
22	281814	-1300K	Knob, black, plastic, with spring	2	2		1900K, OUTPUT LEVEL
23	110100A	-1300K	Button, push, red, plastic	2	2		1900K, REC SELECT
24	261974	-1300K	Button, push, black, plastic	2	4		1900K, REC SELECT
25	291866	-1300K	Sleeve, nylon	1	1		
26	291866	-1300K	Knob, black, plastic	1	1		START/STOP
27	258991	-1300K	Knob, black, plastic	1	1		Operating lever
28	300432	-1300K	Button, push, turquoise, plastic	2	2		1900K, SOURCE/TAPE
29	110100A	-1300K	Button, push, black, plastic	2	2		1900K, SOURCE/TAPE
30	113112	-1300K	Knob, black, plastic, with spring	1	2		5 ON 5
31	301000	-1300K	Panel, aluminum	1	1		
32	286087	-1300K	Panel, oak	1	1		
33	297063	-1300K	Screw, plate, 5/8" No. 6 pan hd, black	6	6		
34	804842	-1300K	Knob, rubber	2	1		supplied with index 39-33 incl
35	991917	-1300K	Plate, with sockets	1	1		
36	806050	-1300K	Screw, plate, 1/4" No. 6 pan hd	4	47		
37	300622	-1300K	Pad, 15 x 5 mm, felt	2	2		
38	263608	-1300K	Socket, 5 pin DIN 180 degrees	1	1		RADIO
39	224795	-1300K	Log, plastic	1	3		
40	238623	-1300K	Socket, photo, double	2	2		LINE IN and LINE OUT
41	994525	-1300K	Cover, bottom, with feet	1	1		supplied with index 35
42	309080	-1300K	Screw, plate, 1/4" No. 6 pan hd	6	6		
43	991942	-1300K	Foot, rubber, with housing	4	4		
44	285679A	-1300K	Plate, chassis, right	1	1		
45	286790A	-1300K	Plate, chassis, left	1	1		
46	298415	-1300K	Bracket, chassis	2	2		
47	227899	-1300K	Screw, plate, 1/4" No. 6 flange hd	2	2		
48	301962	-1300K	Bracket	1	1		
49	210886	-1300K	Clamp, cable, nylon, 3 mm	1	1		
50	227899	-1300K	Screw, plate, 1/4" No. 6 flange hd	1	1		
51	286996	-1300K	Tube, plastic	1	1		
52	201230	-1300K	Table, power, European, with plug	1	1		
53	309080	-1300K	Plate, upper mounting	1	1		
54	301267	-1300K	Screw, plate, 1/4" No. 6 pan hd	2	2		
55	309080	-1300K	Plate	1	1		
56	224795	-1300K	Log, plastic	2	2		
57	236912	-1300K	Switch, slide	1	1		5 ON 5
58	222662	-1300K	Screw, 3 x 6 mm csk hd	2	2		
59	303600	-1300K	Reflector, meter illumination	1	1		
60	309080	-1300K	Screw, plate, 1/4" No. 6 pan hd	1	1		
61	234925	-1300K	Holder, bulb	2	2		
62	290038	-1300K	Bulb, 34 V 30 mA	1	2		
63	861080	-1300K	Meter	2	2		
64	302998	-1300K	Surround, DIN socket, plastic	1	1		
65	301215	-1300K	Surround, push button, plastic	1	1		
66	301137	-1300K	Arm, switch	1	1		
67	303018	-1300K	Plate, indicator, plastic	1	1		
68	991905	-1300K	Board, main amplifier	1	1		1900K, European version
69	991906	-1300K	Board, main amplifier	1	1		1900K, U.S.A. version
70	991944	-1300K	Board, main amplifier	1	1		1900K, European version
71	991945	-1300K	Board, main amplifier	1	1		1900K, U.S.A. version
72	221767	-1300K	Screw, plate, 3/4" No. 4 hex hd	2	2		
73	301248	-1300K	Bracket, amp	1	1		
74	309080	-1300K	Screw, plate, 1/4" No. 6 pan hd	1	1		
75	274182	-1300K	Socket, 5 pin DIN 180 degrees	2	2		MDC, European version
76	294420	-1300K	Socket, jack, 3 pole 1/4 in.	2	2		MDC, U.S.A. version
77	290178	-1300K	Switch, push	1	1		see page 22
78	294420	-1300K	Socket, jack, 3 pole 1/4 in.	1	1		HEADPHONES
79	861083	-1300K	Switch, push	1	1		see page 22
80	991901	-1300K	Board, oscillator	1	1		see page 23



3300X  
3500X



NOTE:  
The numbers on this page are index  
numbers, and must not be used when  
ordering. Please refer to the parts list  
for the Ordering No. and Description.

Fig. 1 Chassis assembly.

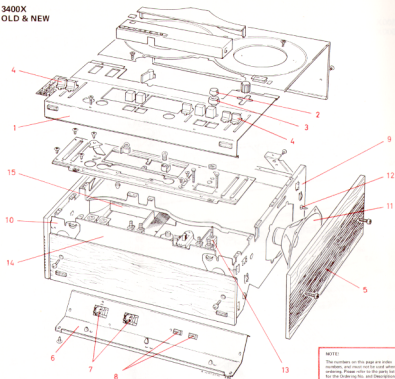


Fig. 2 Chassis assembly.

Chassis assembly.

SPECIFY THIS WHEN ORDERING				Quantity		
Index	Ordering No.	Description	per assy	Total	Notes	
1	993925 -3400X	CHASSIS ASSEMBLY	1	1	3400X	
2	993922 -3400X	Plate, instrument	1	1	European version	
3	305153 -3400X	Knob, tarquedon, plastic	1	1	Swedish version	
4	309869 -3400X	Knob, tarquedon, plastic	1	1	TREBLE	
5	302580 -3400X	Knob, tarquedon, plastic, with spring	1	1	BASS	
6	312271 -3400X	Panel, oak	1	1	INPUT LEVEL and OUTPUT LEVEL	
7	310238 -3400X	Panel, rosewood	1	1		
8	313452 -3400X	Panel, walnut	1	1		
9	310039 -3400X	Panel, oak	1	1		
10	993923 -3400X	Plate, with sockets	1	1	supplied with index 7 and 8	
11	263055 -3400X	Socket, 5 pin DIN 150 degrees	2	2	PHONO and RADIO	
12	264312 -3400X	Socket, loudspeaker, DIN	2	2	LÖRNSPÅR	
13	306632 -3400X	Plate, chassis, right	1	1		
14	308313 -3400X	Plate, chassis, left	1	1		
15	294399 -3400X	Loudspeaker, 8T 131 15 ohm	2	2		
16	313134 -3400X	Screw, plate, 3/8" No. 6 hex hd	4	4		
17	993926 -3400X	Board, tone control	1	1		
18	993928 -3400X	Board, main amplifier	1	1	U.S.A. version, up to serial No. 4300000	
19	993932 -3400X	Board, main amplifier	1	1	European version, up to serial No. 4300000	
20	993931 -3400X	Board, main amplifier	1	1	European version, up to serial No. 4300000	
21	993932 -3400X	Board, main amplifier	1	1	U.S.A. version, up to serial No. 4300000	
22	993920 -3400X	Board, output amplifier	1	1		

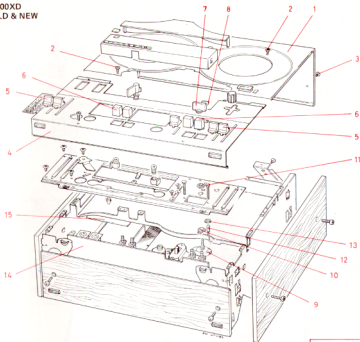


Fig. 3 Chassis assembly.

NOTE

The numbers on this page are index numbers, and must not be used when ordering. Please refer to the same list for the Ordering No. and Description.

Chassis assembly.

SPECIFY THIS WHEN ORDERING				Quantity		Notes
Index	Ordering No.	Description		per Assy	Total	
	*	CHASSIS ASSEMBLY				3600XD
1	314075 -3600XD	Plate, deck	1	1		
2	263688 -3600XD	Screw, 3 x 8 mm csk hd, black	4	-		
3	289550 -3600XD	Screw, plate, 1/4" No. 6 flange hd, black	2	-		
4	603624 -3600XD	Plate, instrument	1	1		European version
	993925 -3600XD	Plate, instrument	1	1		Swedish version
5	302380 -3600XD	Knob, turquoise, plastic, with spring	4	4		INPUT LEVEL and OUTPUT LEVEL
6	310102A -3600XD	Button, push, black, plastic	4	4		RBC SELECT and SOURCE/TAPE
7	307229 -3600XD	Knob, black, plastic	1	1		DOLBY
8	313298 -3600XD	Window, turquoise, plastic	1	1		DOLBY
9	309785B -3600XD	Switch, selector	1	1		
10	309061 -3600XD	Washer	1	1		
11	271367 -3600XD	Nut, 2.6 mm	1	1		
12	906293 -3600XD	Bulb, 14 V 80 mA, with leads	1	1		
13	210737 -3600XD	Drumset, 4 x 4 x 5 mm, rubber	1	1		
14	993933 -3600XD	Board, main amplifier	1	1		European version, up to serial No.4200000
	993934 -3500XD	Board, main amplifier	1	1		U.S.A. version, up to serial No.4200000
	993949 -3600XD	Board, main amplifier	1	1		European version, from serial No.4200000
	993950 -3500XD	Board, main amplifier	1	1		U.S.A. version, from serial No.4200000
15	993927 -3600XD	Board, Dolby	1	1		

For other parts see pages 4 and 5

## Tape path assembly.

SPECIFY THIS WHEN ORDERING				quantity		
Index	Ordering No.	Description	per assy	Total	Notes	
	*	TAPE PATH ASSEMBLY				
1	993999	-3300K Plate, upper mounting	1	1		
2	309060	-3300K Screw, plate, 1/4" No. 6 pan hd	4	-		
3	287553	-3300K Switch, rocker	1	1	ON	
4	286665B	-3300K Button, touch, red, plastic	1	1	REC	
5	286418	-3300K Spring, flat	1	1		
6	286141	-3300K Screw, plate, 3/8" No. 6 flange hd	1	1		
7	996504A	-3300K Bracket, angle	1	1		
8	309060	-3300K Screw, plate, 1/4" No. 6 pan hd	1	-		
9	282438	-3300K Switch, leaf, n/o	1	1	56	
10	992487	-3300K Screw, 2 x 5 mm pan hd	1	2		
11	306288	-3300K Holder	1	1		
12	309060	-3300K Screw, plate, 1/4" No. 6 pan hd	1	-		
13	295720	-3300K Grommet, rubber	1	1		
14	900667	-3300K Bulb, 14 V 80 mA, with leads	1	1		
15	285326	-3300K Bracket, start/stop	1	1		
16	996596	-3300K Bracket, angle, start/stop	1	1		
17	309060	-3300K Screw, plate, 1/4" No. 6 pan hd	2	-		
18	287747A	-3300K Spindle	1	1		
19	286658	-3300K Arm, start/stop, nylon	1	1		
20	208431	-3300K Ring, retaining, external, 3 mm	1	9		
21	282438	-3300K Switch, leaf, n/o	1	-	57	
22	992487	-3300K Screw, 2 x 5 mm pan hd	1	-		
23	286635	-3300K Lever, black, nylon	1	1		
24	302386	-3300K Spring	1	1		
25	288336	-3300K Plate, black, nylon	1	1		
26	288141	-3300K Screw, plate, 3/8" No. 6 flange hd	2	1		
27	294177A	-3300K Lever	1	1		
28	201003	-3300K Ring, retaining, external, 4 mm	1	3		
29	208431	-3300K Ring, retaining, external, 3 mm	1	-		
30	286030	-3300K Plate	1	1		
31	208431	-3300K Ring, retaining, external, 3 mm	1	-		
32	287632	-3300K Roller, nylon	1	1		
33	993915	-3300K Plate, with spindle	1	1		
34	296826	-3300K Bracket, cover mounting	1	1		
35	293336	-3300K Bracket, cover mounting	1	1		
36	291826	-3300K Bracket, cover mounting	1	1		
37	204105	-3300K Washer, 8.5 x 3.5 x 0.7 mm	1	3	mounted on index 34, 35 and 36	
38	286255	-3300K Screw, 3 x 4 mm pan hd	1	4	mounted on index 34, 35 and 36	
39	210757	-3300K Grommet, 6 x 4 x 5 mm, rubber	1	1		
40	202445	-3300K Arm, start/stop	1	1		
41	262000	-3300K Ring, circlip, 3 mm	1	1		
42	993916	-3300K Arm, brake	1	1		
43	207214	-3300K Spring	1	1		
44	203414	-3300K Roller, nylon	1	1		
45	308431	-3300K Ring, retaining, external, 3 mm	1	-		
46	998091	-3300K Lever, interlock	1	1		
47	298609	-3300K Spring	1	1		
48	275490	-3300K Knob, black, plastic	2	2		
49	993912	-3300K Post, guide, tape	1	1	supplied with index 51 and 52	
50	993902	-3300K End-stop, photo electric	1	1	supplied with index 51-55 incl	
51	993911	-3300K Post, guide, tape	1	1	mounted on index 49 and 50	
52	206908	-3300K Screw, 3 x 20 mm ch hd	1	1	mounted on index 49 and 50	
53	286471	-3300K Bulb, 14 V 80 mA, with leads	1	1		
54	296790	-3300K Transistor, photo, MFD 148	1	1		
55	288530	-3300K Spring	1	1		
56	283522	-3300K Guide, tape	3	4		
57	284578	-3300K Spring	3	3		
58	291784	-3300K Arm, brake arm stop	1	1		
59	306733	-3300K Nut, 3 mm	3	3		
60	251496A	-3300K Bracket, angle	1	1		
61	215951	-3300K Screw, 3 x 5 mm ch hd	1	8		
62	291015	-3300K Lever, pressure pad arm	1	1		
63	993904	-3300K Arm, pressure pad	1	1		
64	287050	-3300K Washer, 7 x 3 x 2 mm, nylon	1	2	mounted on index 62 and 63	
65	294203	-3300K Spring	1	1		
66	208431	-3300K Ring, retaining, external, 3 mm	1	1	mounted on index 62 and 63	
67	993919	-3300K Plate, upper-flywheel-bearing	1	1	supplied with index 68-72 incl	
68	215951	-3300K Screw, 3 x 5 mm ch hd	3	-		
69	303586	-3300K Spring	1	2		
70	993904	-3300K Spring, thrust bearing	1	1		
71	283522	-3300K Guide, tape	1	-		
72	266733	-3300K Nut, 3 mm	1	-		

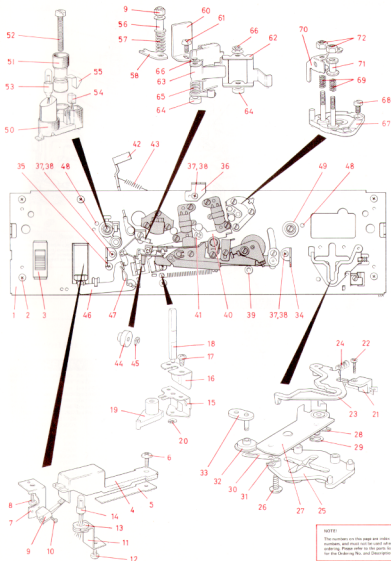


Fig. 4 Tape path assembly.

## ALL MODELS

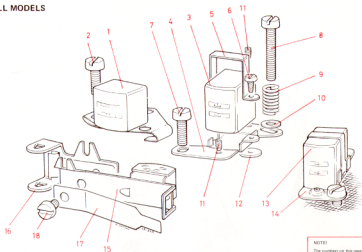


Fig. 5 Head assemblies.

## NOTE

The numbers on this page are index numbers, and must not be used when ordering. Please refer to the parts list for the Ordering No. and Description.

## Head assemblies.

SPECIFY THIS WHEN ORDERING			Quantity	Total	Notes
Index	Ordering No.	Description	per assy		
	*	HEAD ASSEMBLIES			
1	2750-208-3300K	Head, erase, 2 track	1	1	
	2751-188-3300K	Head, erase, 4 track	1	1	
2	217632 -3300K	Screw, 3 x 10 mm ch hd	3	5	
3	2682-078-3300K	Head, record, 2 track	1	1	
	2653-11R-3300K	Head, record, 4 track	1	1	
4	265441A -3300K	Bracket, head mounting	1	1	
5	293422 -3300K	Bracket, U-shaped	1	2	mounted on index 4 and 14
6	292718 -3300K	Screw, plate, 1/4" No. 2 pan hd	1	2	mounted on index 4 and 14
7	217632 -3300K	Screw, 3 x 10 mm ch hd	1	-	mounted on index 4 and 14
8	210622 -3300K	Screw, 3 x 18 mm ch hd	1	3	mounted on index 4 and 14
9	240406A -3300K	Spring	1	2	mounted on index 4 and 14
10	237833 -3300K	Washer, 6 x 3.2 x 0.5 mm	1	2	mounted on index 4 and 14
11	890001 -3300K	Screw, set, 3 x 6 mm	2	4	mounted on index 4 and 14
12	278444 -3300K	Disc	2	4	mounted on index 4 and 14
13	2683-11P-3300K	Head, playback, 2 track	1	1	
	2303-10P-3300K	Head, playback, 4 track	1	1	
14	272046A -3300K	Bracket, head mounting	1	1	
15	2958-04R-3300K	Head, bias, 2 track	1	1	
	2979-03R-3300K	Head, bias, 4 track	1	1	
16	294729 -3300K	Lever, head mounting	1	1	
17	293045 -3300K	Spring	1	-	
18	215931 -3300K	Screw, 3 x 5 mm ch hd	1	1	

# ALL MODELS

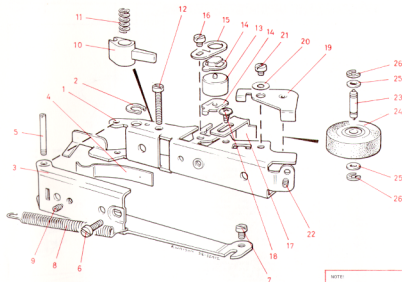


Fig. 6 Pressure roller arm assembly.

## NOTE:

The materials on this page are order numbers, and must not be used when ordering. Please refer to the parts list for the Ordering No. and Description.

## Pressure roller arm assembly.

SPECIFY THIS WHEN ORDERING			Quantity	Total	Notes
Index	Ordering No.	Description	per assy		
	*	PRESSURE ROLLER ARM ASSEMBLY			
1	993903 -3300K	Arm, pressure roller	1	1	
2	217540 -3300K	Ring, retaining, external, 5 mm	1	1	
3	993913 -3300K	Arm, pressure roller, outer	1	1	
4	288063A -3300K	Spring, flat	1	1	
5	211066 -3300K	Post, pivot	1	1	
6	217632 -3300K	Screw, 3 x 10 mm ch hd	1	-	
7	269255 -3300K	Screw, 3 x 4 mm pan hd	1	-	
8	379939 -3300K	Spring	1	1	
9	590500 -3300K	Screw, set, 3 x 5 mm	1	1	
10	243150 -3300K	Lever, plastic	1	1	
11	234478 -3300K	Spring	1	1	
12	210622 -3300K	Screw, 3 x 18 mm ch hd	1	-	
13	991052 -3300K	Roller, flatter	1	1	
14	360579A -3300K	Bearing, plastic	1	1	
15	201180 -3300K	Plate	1	1	
16	210556 -3300K	Screw, 3 x 3 mm ch hd	1	4	
17	210183A -3300K	Screen, playback head	1	1	
18	333367 -3300K	Screw, plate, 1/4" No. 4 flange hd	1	2	
19	286382 -3300K	Bracket, pressure roller	1	1	
20	292344 -3300K	Washer, 8 x 3.2 x 0.3 mm	1	1	
21	210556 -3300K	Screw, 3 x 3 mm ch hd	1	-	
22	212224 -3300K	Screw, set, 3 x 4 mm	1	1	
23	289241 -3300K	Spindle	1	1	
24	994505 -3300K	Roller, pressure, rubber	1	1	
25	258803A -3300K	Washer, 7 x 4 x 0.2 mm, turbax	2	2	
26	230651 -3300K	Ring, circlip, 3.2 mm	2	4	

## Lower mounting plate assembly.

SPECIFY THIS WHEN ORDERING			Quantity		Notes
Index	Ordering No.	Description	per	assy Total	
		LOWER MOUNTING PLATE ASSEMBLY			
1	*	Plate, lower mounting	1	-	
2	2621238	Sheet, plastic	1	1	
3	272150	Pin, spring, 3 x 10 mm	2	2	
4	264420	Moulding, plastic	1	1	
5	264578	Bracket, U-shaped	1	1	
6	309060	Screw, plate, 1/4" No. 6 pan hd	2	-	
7	212036	Holder, ball, plastic	1	1	
8	309060	Screw, plate, 1/4" No. 6 pan hd	1	1	
9	991030	Lever, operating, with ball	1	1	
10	262730	Spring	1	1	
11	263874	Sleeve, nylon	1	1	
12	239631	Ring, circlip, 3.2 mm	1	-	
13	263522A	Spring	1	1	
14	264593	Sleeve, plastic	1	1	
15	991017	Arm, operating	1	1	
16	264526	Fillet, guide, plastic	1	1	
17	231310	Ring, circlip, 5 mm	1	1	
18	2636018	Arm, brake, left	1	1	
19	260512	Spring	1	2	mounted on index 18 and 21
20	201003	Ring, retaining, external, 4 mm	1	-	mounted on index 18 and 21
21	261920	Arm, brake, right	1	1	
22	290124	Bracket, support, brake	2	2	
23	309060	Screw, plate, 1/4" No. 6 pan hd	1	-	
24	991014	Lever, brake	1	2	
25	261041	Spring	1	2	
26	261216	Screw, nylon	2	4	
27	991001	Spring, brake pad, left	1	1	
28	991002	Spring, brake pad, right	1	1	
29	227599	Screw, plate, 1/4" No. 6 flange hd	1	-	
30	301086	Counter	1	1	
31	210156	Screw, 3 x 3 mm ch hd	1	-	
32	215931	Screw, 3 x 5 mm ch hd	1	-	
33	211339	Pulley, plastic	1	1	
34	289794	Belt, drive, rubber	1	1	
35	267167	Heatshink	1	1	
36	309060	Screw, plate, 1/4" No. 6 pan hd	1	1	
37	293163	Plate, lower-flywheel-bearing	1	1	
38	309060	Screw, plate, 1/4" No. 6 pan hd	2	-	
39	261992	Washer, 5/10 x 7 mm	1	1	
40	219386	Ring, felt	1	1	
41	252172	Bearing, 5 mm	1	1	
42	263106	Disc	1	1	
43	990312	Flywheel	1	1	
44	215872	Ring, felt	1	1	
45	263091	Sleeve, plastic	1	1	
46	284119	Switch, leaf, n/o	1	1	
47	231267	Screw, plate, 1/4" No. 4 flange hd	1	-	
48	991015	Arm, with elbow joint	1	1	
49	261325	Foot, pivot	1	1	
50	213110	Ring, circlip, 5 mm	1	1	
51	991003	Spring, brake pad	1	1	
52	990204	Arm	1	1	
53	210236	Screw, 3 x 3 mm ch hd	1	-	
54	262545	Plate, spring mounting	1	1	
55	273402	Spring	1	1	
56	990330	cam, speed selector, nylon	1	1	
57	293838	Plate	1	1	
58	309060	Screw, plate, 1/4" No. 6 pan hd	2	-	
59	262854	Arm, speed selector nylon	1	1	
60	2306298	Roller	1	1	
61	242131	Spring	1	1	
62	990305	Arm, transfer wheel	1	1	
63	216734	Spring	1	2	
64	274930	Washer, 9.8 x 6.3 x 0.3 mm	2	2	
65	235600	Ring, circlip, 5 mm	1	1	
66	990213	Arm, support, transfer wheel	1	1	
67	200290	Washer, 7.5 x 5.2 x 0.5 mm, turbax	1	1	
68	217856	Washer, 7.5 x 5.2 x 0.5 mm, turbax	1	1	
69	239937	Ring, circlip, 4 mm	2	2	
70	204013	Washer, 7.5 x 4.2 x 0.5 mm, turbax	2	2	
71	990233	Wheel, transfer	1	1	
72	239651	Ring, circlip, 3.2 mm	1	-	
73	286770A	Arm, speed selector	1	1	
74	213826	Ring, retaining, external, 6 mm	1	1	
75	212461	Pin, spring, 2 x 16 mm	1	1	
76	288451	Bracket, support, switch	2	2	
77	286912	Switch, slide	1	-	
78	215951	Screw, 3 x 3 mm ch hd	2	-	
79	991041	Belt, drive, rubber	1	1	



3300X }  
3400X } OLD  
3600XD }

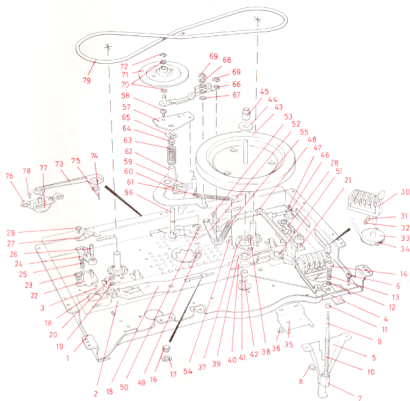


Fig. 7 Lower mounting plate assembly.

NOTE:  
The numbers on this page are index  
numbers, and must not be used when  
ordering. Please refer to the parts list  
for the Ordering No. and Description.

Lower mounting plate assembly.

SPECIFY THIS WHEN ORDERING			Quantity		
Index	Ordering No.	Description	Per Ass'y	Total	Notes
* LOWER MOUNTING PLATE ASSEMBLY					
For indexes 1 - 29 refer to previous list on page 12					
30	301086	-3500K Counter	1	1	
31	210556	-3500K Screw, 3 x 3 mm ch hd	1	-	
32	215501	-3500K Screw, 3 x 5 mm ch hd	1	-	
33	334900	-3500K Pulley, plastic	1	1	
34	299794	-3500K Belt, drive, rubber	1	1	
35	267187	-3500K Heat sink	1	1	
36	309060	-3500K Screw, plate, 1/4" No. 6 pan hd	1	-	
37	293163	-3500K Plate, lower-flywheel-bearing	1	1	
38	309060	-3500K Screw, plate, 1/4" No. 6 pan hd	2	-	
39	261992	-3500K Washer, 5/10 x 7 mm	1	1	
40	219586	-3500K Ring, felt	1	1	
41	232172	-3500K Bearing, 3 mm	1	1	
42	993938	-3500K Flywheel	1	1	
43	215872	-3500K Ring, felt	1	1	
44	263091	-3500K Sleeve, plastic	1	1	
45	235937	-3500K Ring, circlip, 4 mm	1	1	
46	330594	-3500K Ring, felt	1	1	
47	333820	-3500K Pulley, drive, plastic	1	1	
48	237223	-3500K Ring, retaining, external, 8 mm	1	1	
49	993946	-3500K Bracket, U-shaped, capstan mounting	1	1	
50	309060	-3500K Screw, plate, 1/4" No. 6 pan hd	2	-	
51	993941	-3500K Arm	1	1	
52	337185	-3500K Washer, 7.5 x 3.1 x 2 mm	1	1	
53	248042	-3500K Washer, 7.5 x 3.1 x 0.3 mm, turbax	1	1	
54	208431	-3500K Ring, retaining, external, 3 mm	1	1	
55	232482	-3500K Washer, 6 x 2.5 x 0.5 mm, turbax	2	2	
56	335238	-3500K Pulley, plastic	1	1	
57	237970	-3500K Ring, circlip, 1.5 mm	1	1	
58	117617	-3500K Belt, drive, rubber	1	1	
59	115311	-3500K Spring	1	1	
60	993939	-3500K Arm, with elbow joint	1	1	
61	263325	-3500K Post, pivot	1	1	
62	231310	-3500K Ring, circlip, 3 mm	1	1	
63	991003	-3500K Spring, brake pad	1	1	
64	993940	-3500K Arm, spacing	1	1	
65	210556	-3500K Screw, 3 x 3 mm ch hd	1	-	
66	262545	-3500K Plate, spring mounting	1	1	
67	311186	-3500K Spring	1	1	
68	993942	-3500K Arm, drive belt lifter	1	1	
69	993943	-3500K Arm, drive belt lifter	1	1	
70	248042	-3500K Washer, 7.5 x 3.1 x 0.3 mm, turbax	2	4	mounted on index 68 and 69
71	208431	-3500K Ring, retaining, external, 3 mm	1	-	mounted on index 68 and 69
72	241153	-3500K Spring	1	1	
73	990139	-3500K Cam, speed selector, nylon	1	1	
74	291838	-3500K Plate	1	1	
75	309060	-3500K Screw, plate, 1/4" No. 6 pan hd	2	-	
76	262834	-3500K Arm, speed selector, nylon	1	1	
77	2306298	-3500K Roller	1	1	
78	304683	-3500K Spring	1	1	
79	990305	-3500K Arm, transfer wheel	1	1	
80	216734	-3500K Spring	1	1	
81	274930	-3500K Washer, 9.8 x 6.2 x 0.1 mm	2	2	
82	235649	-3500K Ring, circlip, 3 mm	1	1	
83	990313	-3500K Arm, support, transfer wheel	1	1	
84	200299	-3500K Washer, 7.5 x 5.2 x 0.5 mm, turbax	1	1	
85	217836	-3500K Washer, 7.5 x 5.2 x 0.2 mm, turbax	1	1	
86	233937	-3500K Ring, circlip, 4 mm	2	2	
87	304011	-3500K Washer, 7.5 x 4.2 x 0.5 mm, turbax	2	2	
88	990233	-3500K Wheel, transfer	1	1	
89	239051	-3500K Ring, circlip, 3.2 mm	1	-	
90	286779A	-3500K Arm, speed selector	1	1	
91	213826	-3500K Ring, retaining, external, 6 mm	1	1	
92	212461	-3500K Pin, spring, 2 x 16 mm	1	1	
93	286451	-3500K Bracket, support, switch	1	1	
94	286012	-3500K Switch, slide	1	-	
95	215911	-3500K Screw, 3 x 5 mm ch hd	2	-	
96	991041	-3500K Belt, drive, rubber	1	1	

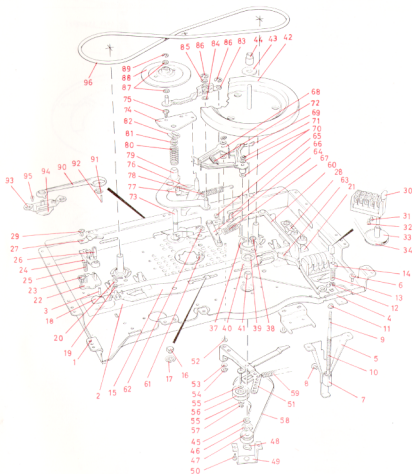


Fig. 8 Lower mounting plate assembly.

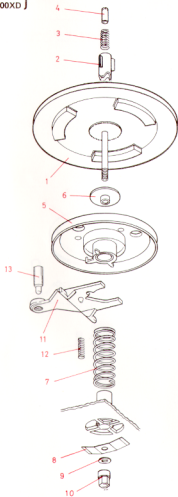
**NOTE!**

The numbers on this page are index numbers, and must not be used when ordering. Please refer to the parts list for the Ordering No. and Description.

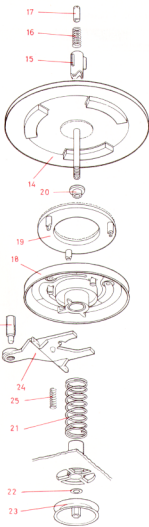
## Clutch assemblies.

SPECIFY THIS WHEN ORDERING			Quantity		Notes
Index	Ordering No.	Description	Per Assy	Total	
	*	CLUTCH ASSEMBLIES			
1	991048 -3300K	Turntable	1	1	left (supply)
2	279096 -3300K	Sleeve, spool hub lock	1	2	
3	277530A -3300K	Spring	1	2	
4	277415 -3300K	Nut, spool hub lock	1	2	
5	991018 -3300K	Wheel, clutch	1	1	
6	219816 -3300K	Bush, flanged	1	1	
7	261805A -3300K	Spring	1	2	
8	292082 -3300K	Spring, flat	1	1	
9	204013 -3300K	Washer, 7.5 x 4.2 x 0.5 mm, turbax	1	2	
10	218767 -3300K	Nut, plastic	1	1	
11	991013 -3300K	Lever, clutch	1	2	
12	261841 -3300K	Spring	1	2	
13	261216 -3300K	Screw, nylon	1	2	
14	991048 -3300K	Turntable	1	1	right (take-up)
15	279096 -3300K	Sleeve, spool hub lock	1	-	
16	277530A -3300K	Spring	1	-	
17	277415 -3300K	Nut, spool hub lock	1	-	
18	991009 -3300K	Wheel, clutch	1	1	
19	991035 -3300K	Ring, clutch	1	1	
20	200549 -3300K	Bush, flanged	1	1	
21	267373B -3300K	Spring	1	-	
22	204013 -3300K	Washer, 7.5 x 4.2 x 0.5 mm, turbax	1	-	
23	215013 -3300K	Pulley, plastic	1	1	
24	991013 -3300K	Lever, clutch	1	-	
25	261841 -3300K	Spring	1	-	
26	261216 -3300K	Screw, nylon	1	-	

3300X }  
3400X } OLD  
3600XD }



SUPPLY



TAKE-UP

Fig. 9 Clutch Assemblies.

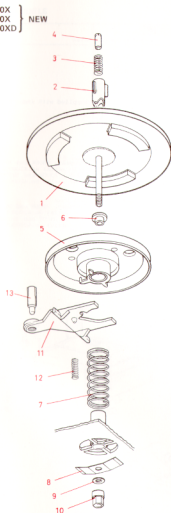
NOTE:

The numbers on this page are index numbers, and must not be used when ordering. Please refer to the parts list for the Ordering No. and Description.

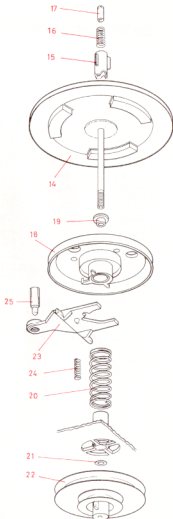
## Clutch assemblies.

SPECIFY THIS WHEN ORDERING			Quantity		Notes
Index	Ordering No.	Description	per assy	Total	
	*	CLUTCH ASSEMBLIES			
1	993954 -3500K	Turntable	1	1	left (supply), supplied with index 2, 3 and 4
2	279096 -3500K	Sleeve, spool hub lock	1	2	
3	277530A -3500K	Spring	1	2	
4	277415 -3500K	Nut, spool hub lock	1	2	
5	993918 -3500K	Wheel, clutch	1	2	
6	200549 -3500K	Rush, flanged	1	2	
7	261805A -3500K	Spring	1	2	
8	293063 -3500K	Spring, flat	1	1	
9	204023 -3500K	Washer, 7.5 x 4.2 x 0.5 mm, turbax	1	2	
10	218767 -3500K	Nut, plastic	1	1	
11	991013 -3500K	Lever, clutch	1	2	
12	261841 -3500K	Spring	1	2	
13	261226 -3500K	Screw, nylon	1	2	
14	993955 -3500K	Turntable	1	1	right (take-up), supplied with index 15, 16 and 17
15	279096 -3500K	Sleeve, spool hub lock	1	-	
16	277530A -3500K	Spring	1	-	
17	277415 -3500K	Nut, spool hub lock	1	-	
18	993918 -3500K	Wheel, clutch	1	-	
19	200549 -3500K	Rush, flanged	1	-	
20	267173B -3500K	Spring	1	-	
21	204023 -3500K	Washer, 7.5 x 4.2 x 0.5 mm, turbax	1	-	
22	330482 -3500K	Pulley, turntable, plastic	1	1	
23	991023 -3500K	Lever, clutch	1	-	
24	261841 -3500K	Spring	1	-	
25	261226 -3500K	Screw, nylon	1	-	

3400X }  
3500X } NEW  
3600XD }



SUPPLY



TAKE-UP

Fig. 10 Clutch assemblies.

NOTE:

The numbers on this page are index numbers, and must not be used when ordering. Please refer to the parts list for the Ordering No. and Description.

Motor assembly.

SPECIFY THIS WHEN ORDERING				Quantity		
Index	Ordering No.	Description	per assy	Total	Notes	
	*	MOTOR ASSEMBLY				
1	241009 -3300K	Motor, 110/220 V 50 Hz	1	1		
2	227432 -3300K	Sleeve, rubber	2	2		
3	271079 -3300K	Box, motor	1	1		
4	236139A -3300K	Bracket, U-shaped, support, motor	1	1		
5	309060 -3300K	Screw, plate, 1/4" No. 6 pan hd	4	-		
6	243940C -3300K	Pulley, drive, 50 Hz	1	1		
	277387A -3300K	Pulley, drive, 60 Hz	1	1		
7	*	Screw	1	-	supplied with index 6	
8	312537 -3300K	Knob, plastic	1	1		

Transformer assemblies.

	*	TRANSFORMER ASSEMBLIES					
9	265462 -3300K	Transformer	1	1			European, 3300K and 3600K up to serial no.4200000
	277473A -3300K	Transformer	1	1			U.S.A., 3300K and 3600K up to serial no.4200000
10	309060 -3300K	Screw, plate, 1/4" No. 6 pan hd	4	-			
11	269450 -3300K	Fuse, 1.25 A, 5 x 20 mm, slow	1	1			
	282300 -3300K	Fuse, 1.25 A, 1 1/4" x 1/4"	1	1			U.S. base
12	334196 -3500K	Transformer	1	1			European, 3300K and 3600K from serial no.4200001
	330834 -3500K	Transformer	1	1			U.S.A., 3500K and 3600K from serial no.4200001
13	309060 -3500K	Screw, plate, 1/4" No. 6 pan hd	2	-			
14	269450 -3500K	Fuse, 1.25 A, 5 x 20 mm, slow	1	1			
	282300 -3500K	Fuse, 1.25 A, 1 1/4" x 1/4"	1	1			U.S. base
15	283780 -3400K	Transformer	1	1			3400K
16	309060 -3400K	Screw, plate, 1/4" No. 6 pan hd	2	-			
17	242090 -3400K	Holder, 5 x 20 mm fuse	1	1			
18	309060 -3400K	Screw, plate, 1/4" No. 6 pan hd	1	-			
19	269450 -3400K	Fuse, 1.25 A, 5 x 20 mm, slow	1	1			



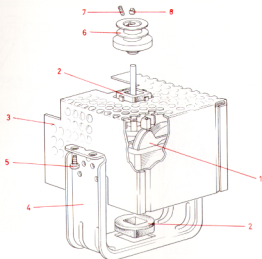


Fig. 11 Motor assembly.

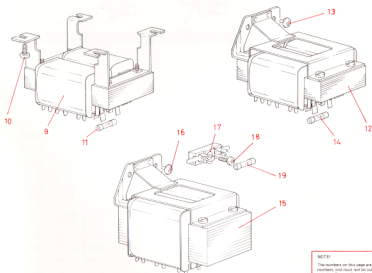


Fig. 12 Transformer assemblies.

NOTE:

The numbers on this page are index numbers, and must not be used when ordering. Please refer to the parts list for the Ordering No. and Description.

# Switches.

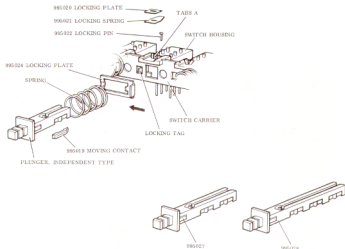


Fig. 13 Switches.

To remove the plunger, pull the locking plate forward and while the locking tag is moved in the direction of the arrow, prevent the other plungers from jumping out. Retract the plunger from the switch housing to gain access to the moving contacts.

By closing the two tabs 'A', the locking plate, locking spring, and locking pin may be removed.

The switch housing may then be removed from the switch carrier after unsoldering the associated terminals.

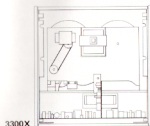


Fig. 14 Printed circuit boards.

NOTE!

The numbers on this page are index numbers, and must not be used when ordering. Please refer to the parts list for the Delivery No. and Description.

Printed circuit boards.

SPECIFY THIS WHEN ORDERING				Quantity	Notes
Index	Ordering No.	Description	per assembly	Total	
	*	PRINTED CIRCUIT BOARDS			
1	993900 -3300X	Board, main amplifier	1	1	European version
	993928 -3300X	Board, main amplifier	1	1	U.S.A. version
2	993901 -3400X	Plate, oscillator	1	1	European version up to
3	993932 -3400X	Board, main amplifier	1	1	serial No.4300000
	993928 -3400X	Board, main amplifier	1	1	U.S.A. version up to
	993951 -3400X	Board, main amplifier	1	1	serial No.4300000
	993952 -3400X	Board, main amplifier	1	1	European version from
	993926 -3400X	Board, tone control	1	1	serial No.4300001
4	993901 -3400X	Board, oscillator	1	-	U.S.A. version from
	993926 -3400X	Board, tone control	1	-	serial No.4300001
6	993920 -3500X	Board, output amplifier	1	1	European version
7	993944 -3500X	Board, main amplifier	1	1	U.S.A. version
	993945 -3500X	Board, main amplifier	1	1	U.S.A. version
8	993901 -3600XD	Board, oscillator	1	-	European version up to
9	993933 -3600XD	Board, main amplifier	1	1	serial No.4200000
	993934 -3600XD	Board, main amplifier	1	1	U.S.A. version up to
	993949 -3600XD	Board, main amplifier	1	1	serial No.4200000
	993950 -3600XD	Board, main amplifier	1	1	European version from
	993901 -3600XD	Board, oscillator	1	1	serial No.4200001
10	993927 -3600XD	Board, Dolby	1	-	U.S.A. version from
11	993927 -3600XD	Board, Dolby	1	1	serial No.4200001



TANDBERGS RADIOFABRIKK A/S  
Postboks 9, Korsvoll, Oslo 8  
Norway